

Szekció menete:

- 9:15-9:30 Bevezető előadás
- 9:30-9:45 Zilahi Tibor (SZTE) előadása
- 9:45-10:00 Németh Katalin (ELTE) előadása
- 10:00-10:05 Szilárdi Edina: ECHE monitoring
- 10:05-10:15 Kérdések
- 10:15 Zárás

Nationaal Agentschap Erasmus+
Onderwijs & Training



Welkom allemaal, hier in Den Haag.

ECHE...

(Erasmus Charter for Higher Education)

Az ECHE biztosítja az **általános minőségi keretet** a felsőoktatási intézmények által az Erasmus+ keretein belül végzett európai és nemzetközi együttműködési tevékenységekhez.

Erasmus pályázat benyújtásának elsődleges feltétele, hogy az intézmény rendelkezzen érvényes ECHE-vel.

Tudja-e egy intézmény monitoringolni saját magát?

Erasmus+

EU programme for education, training, youth and sport

Home

About Erasmus+ ▾

Opportunities ▾

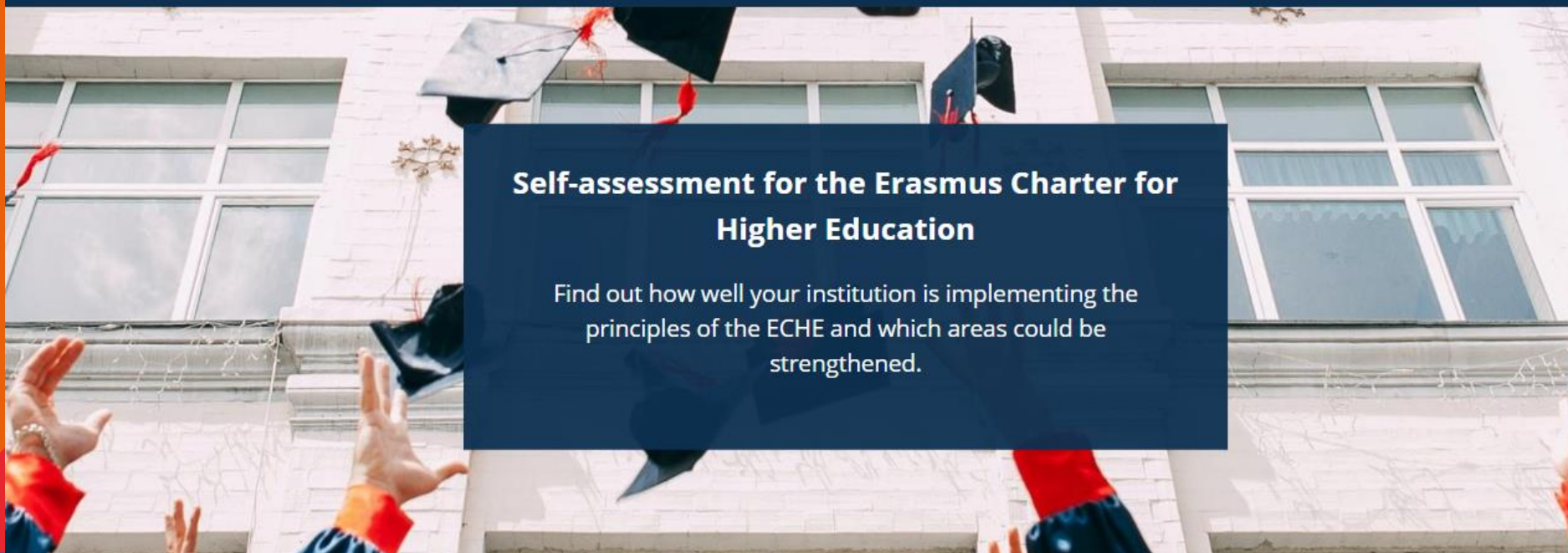
Programme Guide

Resources and tools ▾

What's new? ▾

Projects ▾

You are here: [Erasmus+](#) / [Self-assessment for ECHE](#)



Self-assessment for the Erasmus Charter for Higher Education

Find out how well your institution is implementing the principles of the ECHE and which areas could be strengthened.

Mi az a „self-assessment tool”?

- Ez a *self assessment tool* segít megtudni, hogy **intézménye mennyire valósítja meg az ECHE alapelveit**, és mely területeket lehetne megerősíteni. **Személyre szabott jelentéseket készít**, amelyek vizuális áttekintést nyújtanak az intézmény teljesítményéről, valamint **konkrét javaslatokat tesznek az ECHE végrehajtásának további javítására.**

Hozzáférési követelmények:

EU Login fiók

Start the ECHE self-assessment process now!

Choose which self-assessment is most relevant to your position in your institution.

[Log in to start your self-assessment](#) →

Két online értékelés érhető el:

- Rektorok és rektorhelyettesek/kancellárok.
 - Tudja meg, hogy intézménye mennyire valósítja meg a Charta elvárásait. Ez az értékelés mindössze **10 percet vesz igénybe.**
- Nemzetközi kapcsolatokért felelős képviselők és Erasmus+ koordinátorok.
 - Alapos képet kaphat intézménye teljesítményéről az Erasmus+ tevékenységek irányítása terén. Ez az értékelés körülbelül **40 percet vesz igénybe. (14 kérdés)**

Choose your profile

Rectors, Vice Rectors, Vice Chancellors

On behalf of your Higher Education Institution, you (or your Rector, Vice Rector or Vice Chancellor) have signed an Erasmus Charter for Higher Education (ECHE). Do you want to know how your HEI is performing in implementing the expectations of the Charter?

[Start your assessment](#)

International Relations Officers, Erasmus+ Coordinators

As a member of staff responsible for implementing the Erasmus Charter for Higher Education (ECHE) and the Erasmus+ programme, are you curious about how your institution is performing?

[Start your assessment](#)

Erasmus+

EU programme for education, training, youth and sport

Self-assessment for ECHE

Start your assessment

Assessments

Case Studies

User Profile

You are here: [Erasmus+](#) / [ECHE](#) / [ECHE officer](#)



Complete your assessment as Relation Officer/Erasmus+ Coordinators

Complete the assessment below by clicking all the appropriate boxes locate next to each sub-statement. At the end of the assessment your result will be displayed alongside relevant case material / good practice examples.

Start

Complete

Welcome! Applying for and receiving the [Erasmus Charter for Higher Education](#) [↗](#) constitutes a commitment to respect, in full, all of the principles described in the Charter. This website has been developed with the objective to help you and your peers to **make the ECHE work in practice**.

The ECHE principles are the foundation for participation in the Erasmus+ Programme. Implementing these principles contributes to the **internationalisation** of higher education institutions, successful cooperation and increases the **impact** of the Erasmus+ programme. It is vital that all **5000+ higher education institutions** apply it correctly, as they **all depend on each other** in Erasmus+ mobility and cooperation projects.

Save Draft

Next >



Complete your assessment as Relation Officer/Erasmus+ Coordinators

Complete the assessment below by clicking all the appropriate boxes locate next to each sub-statement. At the end of the assessment your result will be displayed alongside relevant case material / good practice examples.

Start

Complete

1



Your institution has a strategy and an overarching structure supporting internationalisation

- The internationalisation strategy is available and prominently displayed on your website
- It promotes incoming and outgoing student and staff mobility
- It promotes engagement in European and international cooperation projects
- The institution has a clear plan to implement the strategy
- The implementation of the strategic plan is monitored
- Specific support measures are provided to staff working at all levels of the institution with outgoing and incoming participants. For example: allocation of additional resources, training on intercultural competences and other relevant aspects of the mob
- Incentives are provided to staff involved in international activities

Save Draft

< Previous

Next >



Complete your assessment as Relation Officer/Erasmus+ Coordinators

Complete the assessment below by clicking all the appropriate boxes locate next to each sub-statement. At the end of the assessment your result will be displayed alongside relevant case material / good practice examples.

Start

Complete

8



Before the mobility, your institution has established formal procedures for recognising student mobility (good practices linked to e.g. the use of Learning Agreements)

- Which are made publicly available on the institution's website
- Ensuring that the mobile participant, sending and receiving HEI/organisation/enterprise (i.e. all three parties) sign the Learning Agreement before the start of the mobility
- Ensuring that credits taken abroad reflect the workload of the local students proportionally to the time spent abroad (60 ECTS per year/30 ECTS per semester)
- Including information to students on grade conversion prior to the mobility period
- Including allocation of responsibility to an academic who has the authority to approve, amend and recognise the Learning Agreements on behalf of the responsible academic body
- Ensuring that clear and transparent processes are in place for amendments of such agreements (i.e. Learning Agreements)

Save Draft

< Previous

Next >

General recommendations

- 1 Your institution has a strategy and an overarching structure supporting internationalisation
 - 2 Your institution has established a framework of Inter-Institutional Agreements for Erasmus+ mobility
 - 3 Your institution expresses its commitment to equal access and opportunities to mobile participants
- Before the mobility**
- 4 Your institution has a course catalogue
 - 5 Your institution has adopted formal selection procedures for Erasmus+ activities
 - 6 Before the mobility, your institution provides support to incoming and outgoing students and staff
 - 7 Your institution provides specific support for incoming and outgoing mobility participants from under-represented groups (students or staff with disabilities, students from lower socio-economic backgrounds, with family responsibilities or with part-time jobs, etc.)
 - 8 Before the mobility, your institution has established formal procedures for recognising student mobility (good practices linked to e.g. the use of Learning Agreements)
 - 9 Your institution has established formal procedures for recognising staff mobility for both teaching and training activities abroad
- During the mobility**
- 10 During the mobility, your institution fosters the integration of the incoming mobile participants
- After the mobility**
- 11 At the end of the mobility, your institution has formal procedures for recognising student mobility (good practices linked to recognition at the end of the mobility, e.g. in the use of Transcripts of Records and Grade Distribution Tables)
 - 12 Your institution issues a Diploma Supplement
 - 13 Your institution promotes and recognises staff mobility
 - 14 With regards to the outcomes and experiences of Erasmus+ activities

General recommendations

- 1 Your institution has a strategy and an overarching structure supporting internationalisation
- 2 Your institution has established a framework of Inter-Institutional Agreements for Erasmus+ mobility
- 3 Your institution expresses its commitment to equal access and opportunities to mobile participants

Before the mobility

- 4 Your institution has a course catalogue

General recommendations

1



Your institution has a strategy and an overarching structure supporting internationalisation

Must have

The internationalisation strategy is available and prominently displayed on your website

Guidance note:

Internationalisation is an important driver for institutional change, and has a great influence on the major activities of a higher education institution (HEI) i.e. education and research. The importance of internationalisation is recognised, and most institutions have a strategy for internationalisation. However, for a strategy to be efficient, and for it to drive the HEI's activities regarding internationalisation, there is a need for its acceptance from across the whole institution. In addition the strategy could also be accessible to external collaborative partners. It is highly important to have the institution's internationalisation and modernisation strategy published and easily accessible to all.

Best practices

It promotes incoming and outgoing student and staff mobility

Guidance note:

Mobility is important to the development of the institution as a whole as well as for the individual participants. Therefore the HEI should make mobility and international cooperation a central element in its institutional policies, and explicitly and consistently promote and support student and staff mobility. Non-discrimination policies and further emphasis on the promotion of mobility for under-represented groups should also form an integral part of the institutional support structures.

Case studies

[The effective management and ownership of Erasmus + for 'internationalisation' internationalisation at the University of Helsinki](#)



Before the mobility

4



Your institution has a course catalogue

Best practices

Case studies

["Standing out from the crowd" - supporting students through full recognition and documenting of mobility outcomes](#)



5



Your institution has adopted formal selection procedures for Erasmus+ activities



6



Before the mobility, your institution provides support to incoming and outgoing students and staff



7



Your institution provides specific support for incoming and outgoing mobility participants from under-represented groups (students or staff with disabilities, students from lower socio-economic backgrounds, with family responsibilities or with part-time jobs, etc.)



8



Before the mobility, your institution has established formal procedures for recognising student mobility (good practices linked to e.g. the use of Learning Agreements)



„Self-assessment tool” jellemzői

✓ Átfogó áttekintés

Ingyenes átfogó áttekintést kaphat intézménye teljesítményéről. Mindössze annyit kell tennie, hogy elvégezze az értékelést, hogy azonosítsa a legfontosabb fejlesztési területeket.

📊 Időbeli értékelés

Képes legyen értékelni az idő előrehaladását, és összehasonlítani a Charta végrehajtását más intézményekkel.

💬 Hasonlítsa össze az eredményeket

Az eredmények a megfelelő bevált gyakorlati példák mellett jelennek meg. Eredményeit megoszthatja kollégáival, vagy felkérheti őket önértékelésre, hogy holisztikus jelentést készítsenek, és párbeszédet kezdjenek.

👍 Változást hoz

Alakítson ki jobb intézményi stratégiát, és idézzen elő pozitív változást intézményében! Az Erasmus+ programban való részvétel vonzóbbá teszi intézményét a hallgatók és az alkalmazottak számára, és elősegíti a tanítási és tanulási módszerek modernizálását és még sok mást!

🔗 Az elkötelezettség erősítése

Erősítse meg intézménye elkötelezettségét az ECHE alapelvei iránt, amelyek hozzájárulnak a másokkal való sikeres együttműködéshez és a közös nagyobb hatás eléréséhez

🔒 Titoktartás

Az eredmények bizalmasak, és csak Ön láthatja. Sem az Európai Bizottság, sem az Erasmus+ nemzeti irodái nem férhetnek hozzá az eredményeidhez, hacsak nem döntesz, hogy megosztod azokat.

Miért hasznos?

- Az intézmény egy átfogó képet kap arról, hogy ECHE-ben vállaltakhoz képest milyen minőségben teljesít.
- Segít felkészülni egy esetleges monitoring látogatásra.
- Fluktuáció esetén az új koordinátoroknak kiváló kezdő feladat a program működésének és annak alapelveinek megismerésében.
- Rugalmas, bármikor elvégezhető önellenőrzési módszer.

Köszönöm a figyelmet!